

## **FIRE BURGLARY INSTRUMENTS, INC. ONE YEAR LIMITED WARRANTY**

Fire Burglary Instruments, Inc. a subsidiary of Pittway Corporation, and its divisions, subsidiaries and affiliates ("Seller"), 163 Eileen Way, Syosset, New York 11791, a subsidiary of Pittway Corporation, warrants its security equipment (the "product") to be free from defects in materials and workmanship for one year from date of original purchase, under normal use and service. Seller's obligation is limited to repairing or replacing, at its option, free of charge for parts, labor, or transportation, any part proven to be defective in materials or workmanship under normal use and service. Seller shall have no obligation under this warranty or otherwise if the product is altered or improperly repaired or serviced by anyone other than the Seller. In case of defect, contact the security professional who installed and maintains your security system or the Seller for product repair.

This one year Limited Warranty is in lieu of all other express warranties, obligations or liabilities. THERE ARE NO EXPRESS WARRANTIES WHICH EXTEND BEYOND THE FACE HEREOF. ANY IMPLIED WARRANTIES, OBLIGATIONS OR LIABILITIES MADE BY SELLER IN CONNECTION WITH THIS PRODUCT, INCLUDING ANY IMPLIED WARRANTY OF MERCHANTABILITY, OR FITNESS FOR A PARTICULAR PURPOSE OR OTHERWISE, ARE LIMITED IN DURATION TO A PERIOD OF ONE YEAR FROM THE DATE OF ORIGINAL PURCHASE, ANY ACTION FOR BREACH OF ANY WARRANTY, INCLUDING BUT NO LIMITED TO ANY IMPLIED WARRANTY OF MERCHANTABILITY, MUST BE BROUGHT WITHIN 18 MONTHS FROM DATE OF ORIGINAL PURCHASE. IN NO CASE SHALL SELLER BE LIABLE TO ANYONE FOR ANY CONSEQUENTIAL OR INCIDENTAL DAMAGES FOR BREACH OF THIS OR ANY OTHER WARRANTY, EXPRESS IMPLIED, OR UPON ANY OTHER BASIS OF LIABILITY WHATSOEVER, EVEN IF THE LOSS OR DAMAGE IS CAUSED BY THE SELLER'S OWN NEGLIGENCE OR FAULT. Some states do not allow limitation on how long an implied warranty lasts or the exclusion or limitation of incidental or consequential damages, so the above limitation or exclusion may not apply to you.

Seller does not represent that the product may not be compromised or circumvented; that the product will prevent any personal injury or property loss by burglary, robbery, fire or otherwise; or that the product will in all cases provide adequate warning or protection. Buyer understands that a properly installed and maintained alarm may only reduce the risk of a burglary, robbery or fire occurring without providing an alarm, but it is not insurance or a guarantee that such will not occur or that there will be no personal injury or property loss as a result. CONSEQUENTLY, SELLER SHALL HAVE NO LIABILITY FOR ANY PERSONAL INJURY, PROPERTY DAMAGE OR OTHER LOSS BASED ON A CLAIM THE PRODUCT FAILED TO GIVE WARNING. However, if Seller is held liable, whether directly or indirectly, for any loss or damage arising under this Limited Warranty or otherwise, regardless of cause or origin, Seller's maximum liability shall not in any case exceed the purchase price of the product, which shall be the complete and exclusive remedy against Seller. This warranty gives you specific legal rights, and you may also have other rights which vary from state to state. No increase of alteration, written or verbal, to this warranty is authorized.

***FBI Fire Burglary  
Instruments, Inc.***  
A Subsidiary of Pittway Corp.

# ***XL STAR***

## **4612**

**NOTE: Owners manual not to be removed by anyone but the occupant.**

## **Owners Manual**

***FBI Fire Burglary  
Instruments, Inc.***

163 Eileen Way Syosset NY 11791

## 1. INTRODUCTION

Congratulations on your decision to protect your home or business with the STAR XL4612 security system. You have chosen a reliable, state of the art security system that is remarkably easy to operate. Your system has been professionally installed by your local Security Company who can explain the specifics of your system within your location.

The keypad is the arming station for the STAR XL4612. There are three different versions available;

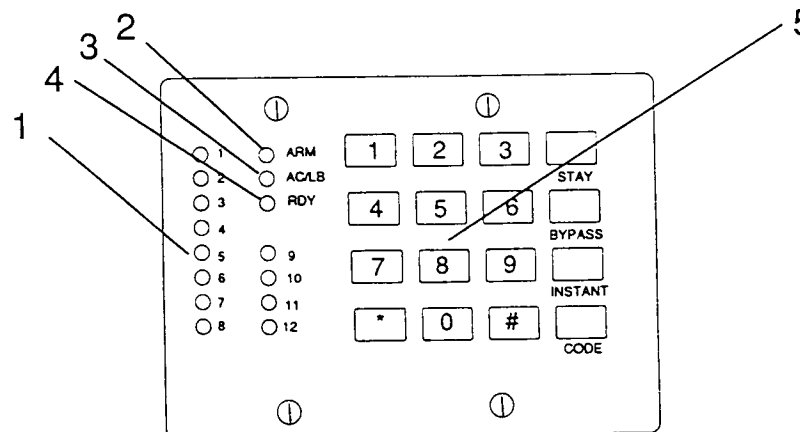
**XL4612RM** Metal plate keypad containing indicator lights for each of the 12 zones (areas of protection). This keypad can be flush mounted into your wall or surface mounted in a back box.

**XL4800LED** Plastic cased keypad containing indicator lights to show the status of each of the zones. The zone indicator lights are located behind the plastic sliding door of the keypad (left hand side). NOTE: This keypad displays zone status indication lights for 16 zones.

**XL4800LCD** Plastic cased keypad containing a two line LCD (liquid crystal display) with a two line readout.

Please identify the keypad(s) present on your system from the diagrams shown in the sections that follow.

## 2. KEYPAD LAYOUT XL4612RM



XL4612RM KEYPAD

**1) ZONE STATUS INDICATORS** - displays the current zone status as follows;

ALARM	Fast blinking.
BYPASS	Slow blinking low intensity.
TROUBLE	Slow pulse
NOT READY	Solid ON
READY	OFF

**2) ARM/DISARM INDICATOR** - Shows whether the system is currently armed (ON) or disarmed (OFF).

If the system is armed (ARMED indicator ON) then the RDY light will indicate the arming mode (see item 3 below)

**3) AC/LOW BATTERY** - shows whether the system is running on AC (ON) or backup battery (OFF). If the light is blinking slowly then the battery is low, if it is blinking rapidly then there is a telephone line failure detected.

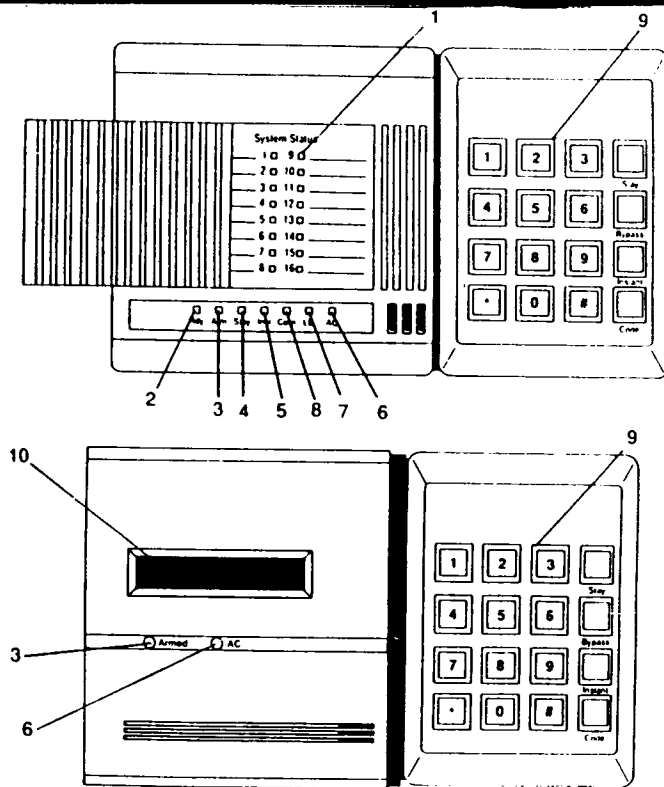
**4) READY** Indicates whether the system is ready for arming (ON = Ready, OFF = Not Ready).

In addition, the RDY light shows the arming status if the ARMED LED is ON as follows:

OFF	= Armed in Away mode
Slow Blink	= Armed in STAY mode (interior zones bypassed)
Fast Blink	= Armed in INSTANT mode (exit/entry delay eliminated)
Fast & Slow Blink	= Armed in STAY-INSTANT mode

**5) NUMERICAL KEYPAD** operates in a similar manner to a calculator or telephone with the digits 0 - 9 and \* # clearly marked.

### 3. KEYPAD LAYOUT XL4800LCD XL4800LED



The XL4800LED contains indicator lights for the zone status, and the XL4800LCD keypad contains a two line English language display.

**1) ZONE STATUS INDICATORS** - Your protected location has been divided into areas of protection known as zones. The zone indicators are located behind the sliding plastic door and displays the current status of each zone as follows:

ALARM	Fast blinking.
BYPASS	Slow blinking low intensity.
TROUBLE	Slow pulse
NOT READY	Solid ON
READY	OFF

**2) READY** Indicates whether the system is ready for arming.

**3) ARM/DISARM INDICATOR** - Shows whether the system is currently armed (ON) or disarmed (OFF).

**4) STAY** - shows the system has been armed with the interior zones bypassed.

**5) INSTANT** - shows whether the system has been ARMED with all delay zones instant.

**6) AC** - shows whether the system is running on AC (ON) or backup battery (OFF).

**7) BAT** - Indicates low battery condition. Slow pulse = low battery, OFF = Normal

**8) COM** Indicates a communications failure with the Central station

**9) NUMERICAL KEYPAD** operates in a similar manner to a calculator or telephone with the digits 0 - 9 and \* # clearly marked.

**10) DISPLAY AREA** - This section of the LCD keypad displays the current system status in this two line by twelve character display. The second line of this display can be programmed by your installer to contain customized descriptors for the areas of protection within your location.

### 4. KEYPAD CONVENTIONS

Throughout this users manual the following conventions are used to display the keystrokes required to perform the functions.

<b>BYPASS</b>	Key labeled BYPASS on keypad.
<b>INSTANT</b>	Key labeled INSTANT on keypad.
<b>STAY</b>	Key labeled STAY on keypad.
<b>CODE</b>	Key labeled CODE on keypad
<b>[USER]</b>	Four digit user code.

### 5. ARMING THE SYSTEM

ARMING the system will activate all portions of your Security System. Arming can only be performed if all zones are READY. For example, if a protected door is open the system cannot be armed.

#### SYSTEM READY

The system is ready to be armed if the READY indicator light ON. On LCD keypads the following display will appear:

**SYSTEM READY**

If the system is ready, ARMING can be performed as follows;

#### ARMING PROCEDURE:

1. Enter your four digit user code into the keypad:  
[USER]

The ARMED indicator light will now be lit and if you are leaving the home you may exit through a door designated by your installer as an exit/entry zone for a fixed time period known as the exit delay.

The entry exit times for your system are as follows;

**ENTRY:** \_\_\_\_\_ seconds- **EXIT:** \_\_\_\_\_ seconds

LCD keypads will display the following message;

**ON AWAY .....**

NOTE: The system can be armed without the backup battery connected.

#### SYSTEM NOT READY

If the system is not ready to be armed the READY indicator will be OFF. On LED based keypads the zone indicator lights will display the zones which are currently not ready. The condition of each zone indicator reflects the status of each zone as follows;

ALARM	Fast blinking.
BYPASS	Slow blinking low intensity.
TROUBLE	Slow pulse
NOT READY	Solid ON

The LCD keypad a display will appear indicating that the system is not ready followed by displays showing the zone number and description of the zone or zones which are not ready. For example:

**SYSTEM NOT READY**

**NOT RDY    ZN 01  
FRONT DOOR**

In this example, the front door is not ready (Zone 1).

In order to make the system ready determine which zones are not ready by observing the zone indicator lights, or the display section of the LCD keypad. From the zone number you can find out which area of protection is not ready.

For example, assume the zone 1 is not ready. Typically this might mean that a protected door or window is open.

>> Once the problems with each zone have been resolved the READY light will appear and the system can be armed.

To ARM the system when the system is NOT READY one of the following actions are necessary;

- Make the zone(s) ready. Determine which zones are not ready and perform what is necessary to ready the zone(s) (example, close the door or window, etc.), or

- Bypass the zone(s) not ready. Bypassing should only be performed if the zone cannot be made ready or intentionally will remain not ready. Remember, zones that are bypassed are not protected when the system is armed.

## 6. DISARMING

Disarming the security system will deactivate the burglary portions of the system.

This procedure can also be used to reset your system if you accidentally set off the system ( example, opened a window while the system was armed, or excessive amount of smoke activated fire protection system).

### DISARM PROCEDURE:

[USER]

Enter your user code.

### IF NO ALARMS HAVE TAKEN PLACE

Upon disarming the ARMING indicator will go off.

The system display will reflect the current status. LCD keypads should display the SYSTEM READY display.

### IF ALARMS HAVE TAKEN PLACE

If alarms or other conditions such as system troubles have taken place since the initial system arming, they will appear on the display. The conditions that have occurred appear in the zone display section of the keypad. LED based keypads will reflect the current system status through the indicator lights as follows;

ALARM	Fast blinking.
BYPASS	Slow blinking low intensity.
TROUBLE	Slow pulse
NOT READY	Solid ON

Burglary alarms will be indicated with a STEADY sound through the keypad while FIRE alarms will generate a pulsing sound.

LCD keypads will show the alarm conditions with a display as follows:

ALARM    ZN 01  
FRONT DOOR

This display shows the zones in alarm. After entry of your four digit user code the following display will appear:

ALARM MEM    ZN 01  
FRONT DOOR

If an intrusion has taken place while you were away, do not enter until the location has been secured!!!.

>> To clear the display of the alarm or trouble conditions and silence the audible signal enter [USER] again.

## 7. STAY

The STAY mode is another way to ARM your system while you remain in the location. The STAY mode will deactivate any interior protection zones which means that you will be free to walk throughout your location without activating the alarm system.

In order to enter the STAY mode, the system must be READY. (see previous description).

### STAY PROCEDURE:

#### STAY [USER]

Depress the STAY key followed by your user code.

After a successful STAY arming the ARMED indicator will be lit. In addition, on the XL4612RM keypad the RDY indicator will slowly blink. On the XL4800LED keypad the STAY indicator will be lit.

On the XL4800LCD keypad the following display will appear;

ON: STAY

In the STAY mode only the external or perimeter burglary protection is active. You are free to walk around the residence without activating any of the interior protection zones

>> . Remember, you must DISARM the system to when you want to leave the premise.

Note: The STAY option will automatically be reset after the system is disarmed.

## 8. INSTANT

The INSTANT mode arms the system and eliminates the entry time delay interval. This mode could be used so that if anyone enters through an entry/exit zone the alarm system will instantly activate.

The system must be ready to select the INSTANT option.

### INSTANT PROCEDURE:

#### INSTANT [USER]

Depress the INSTANT key followed by your user code.

Upon successful INSTANT ARMING of the system the ARMED indicator will be lit. In addition, the XL4612RM keypad the RDY light will blink (NOTE: This blink is slightly faster than the indication for the STAY mode). On the XL4800LED keypads the Instant indicator will be ON.

The XL4800LCD keypad will contain the following message;

ON:INSTANT

Note: The INSTANT option will automatically be reset after the system is disarmed.

## 9. INSTANT - STAY

The INSTANT STAY mode will arm the system with the characteristics of both the INSTANT and STAY modes. The system will be armed with the interior portions bypassed and the entry delay will be suspended.

The system must be READY in order to enter this mode.

### PROCEDURE:

#### INSTANT STAY [USER]

or

#### STAY INSTANT [USER]

Depress the INSTANT and STAY keys in any order followed by your user code.

After a successful INSTANT STAY arming the ARMED indicator will be lit.

In addition, the RDY light on XL4612RM keypads will blink slowly then rapidly in succession. On the XL4800LED keypads both the INSTANT and STAY lights will be ON. The XL4800LCD keypad will contain the following message;

**ON:STAY INSTANT**

>> You cannot exit the premise through an exit/entry zone while the system is armed in this mode.

## 10. BYPASS

Bypasses are performed to eliminate burglary zones that are not ready or faulty from activating the security system.

### BYPASS PROCEDURE:

#### BYPASS [USER] ZN

Depress the BYPASS key followed by your user code and zone number (1-6) to be bypassed.

Example:

**BYPASS [USER] 2** Will bypass zone 2.

If the zone has already been bypassed, the sequence will unby-pass the zone except if the system is armed and the unby-passed zone is still not ready. Unby-pass means that the zone returns as an active burglary zone.

After the bypass (or unby-pass) command has been accepted the unit will emit a continuous beep and zone or zones that have been bypassed will appear in a slow blinking mode in the zone status area on the XL4612RM or XL4800LED keypads.

The XL4800LCD keypad will display the zone bypasses as a secondary display after the SYSTEM READY or SYSTEM NOT READY as shown below:

**BYPASS ZN 01  
FRONT DOOR**

If multiple zones are bypassed then more than one display will appear.

## 11. UNBYPASS

The UNBYPASS function removes an existing bypass from a currently bypassed zone. After UNBYPASSING a zone, the bypass indication will be removed for that zone on either the LCD or LED keypad.

The procedure is similar to a bypass.

### UNBYPASS PROCEDURE:

#### BYPASS [USER] ZN

See bypass description.

## 12. USER DEFINITION

Users can be entered or modified directly through the keypad. The STAR XL-4612 security system can have up to thirty different users. Users number 1 & number 2 are known as the master users and are the only users allowed to modify other users.

### USER DEFINITION PROCEDURE:

#### CODE [USER] [US number] [USERID]

where;

[USER] Is the master user code [User number 1 or User number 2, four digits).

[US number] User number (01-30)\*

[USID] New user ID (0000 - 9999).

Note: (\*) If ambush code capability has been enabled by your installing company then user number 30 will be used as the system ambush code. If an arming only code (maid code) has been defined by your installer then user number 29 can only arm the system.

If a single user door strike code has been created by your installer then user number 28 is dedicated to that function.

Please check with your installer to determine whether any of these special purpose users codes exist.

Example,

To create user number 13, with a user access code of 4567, (assume a master user code of 1234), enter;  
**CODE 1234 13 4567**

>> Any error detected during the USER definition process will cause the keypad to beep rapidly four times. If an error is detected retry the entire command.

## 13. USER DELETION

Removal of users from the panel can be performed as follows;

### USER DELETION PROCEDURE:

#### CODE [USER] [User number] #

Where:

[USER] Master user code

[User number] Represents the user number being deleted.(03-30). Note: Master users (User number 1 or number 2) cannot be deleted.

# is the # key from the keypad.

Example, Delete user number 26 (assume master user code of 6789)  
**CODE 6789 26 #**

## 14. KEYPAD EMERGENCY CONDITIONS

The XL4612 can also initiate three separate emergency conditions directly through the keypad. These conditions must be activated by your installer and can be initiated through simultaneous depression of two keys as follows:

DESCRIPTION	KEYSTROKES
Panic	* #
Fire	7 9
Aux.	1 3

For example, to initiate a keypad panic signal press the \* and # keys at the same time. Consult with your alarm installer to determine the operation of these conditions within your system.

## 15. DURESS

The STAR XL4612 system has capability to send an emergency signal to the Central Station if you are forced to enter the premise. This ambush capability can be programmed by your installer. If active, then user code number 30 will be your ambush code.

## 16. ARM-ONLY (MAID) CODE

Another option selectable by your installer is an arm only code. If selected then user code number 29 can only arm the system. This could be useful for a maid or maintenance worker to allow them to activate the security system as they leave.

## 17. DOOR STRIKE USER CODE

In certain installations there may be a door (or other device) which is programmed to be activated through entry of a user code. If configured by your installer user code number 28 can be dedicated for this purpose. If programmed in this manner then entry of user number 28 will not arm and disarm the system as the other codes, but activate an external device such as a door strike.

## 18. KEYPAD TAMPER

If 21 characters have been entered into the keypad without a valid user code or command being entered then the keypad will beep continuously. To silence the keypad enter a valid user code.

## 19. QUICK ARMING (# 1)

If selected by your installer a quick arming (# 1) command is available. This command will arm the system without entry of a user code. NOTE: System disarming will require a user code.

To quick arm enter:  
# 1

## 20. QUICK FORCED ARM (# 2)

If selected by your installer the quick forced arm command (# 2) will arm the system without the need for entry of a user code and will bypass any burglary protection zones that are not ready.

To quick forced arm enter:  
# 2

## 21. SET TIME OF DAY (# 3)

The XL4612 system contains a real-time clock for the auto-arming and system test capability. The time of day can be set through any keypad using the following command:

# 3 [USER] HR MN  
Time entry is performed in 24 hour time (military time). For example to set the clock for 10:25PM (assume a user code of 4567) enter:

# 3 4567 20 25

NOTE: If the system clock needs to be reset, the XL4612RM or XL4800LED keypads will blink rapidly in succession every 30 seconds. The XL4800LCD keypad will display a message. This could occur if the time has never been set or if total system power (AC and battery) was removed for a prolonged period of time.

NOTE: Consult your installer to determine whether your user code is necessary for setting the time.

## 22. ZONE DIRECTORY (# 4)

To view a listing of the zone descriptors from the XL4800LCD keypad enter:  
# 4

This will scroll the zone descriptors on the keypad display.

## 23. SET AUTO-ARM TIME (#5)

Another option selectable by your installer is auto arming. This feature means that the system can be programmed to arm at a preprogrammed time every day. This will occur at the selected time if the system is not already armed. For example, if you have an 11:30 PM auto-arming time programmed and fall asleep without arming the system, the panel will automatically arm at 11:30.

### WARNING INDICATOR

If programmed by your installer a warning signal can be selected to provide an audible warning two minutes prior to the auto-arming time. This warning will repeat every 30 seconds until the auto-arming time. If you hear the warning signal and do not want the system to auto-arm for that day only, simply enter your four digit user code. The keypad will emit a beep and the indicator lights on LED based keypads will blink rapidly in succession to acknowledge that you have removed the auto-arming time for the day.

### HOW TO CHANGE THE AUTO-ARMING TIME

To modify the everyday auto-arming time enter the following command:

#5 [USER] HR MN

For example to change the auto-arming time to 11:45 PM (assume a user code of 5678) enter:

# 5 5678 23 45

NOTE: All times are entered in 24 hour (military) time.

## 24. CHIME MODE (#6)

The XL4612 system contains an optional chime mode which causes the keypad sounder to activate for one second every time selected zones such as the entrance door are opened while the system is disarmed. For example, this could inform you each time the front door was opened while you were at home. To activate the chime function press # 6 from the keypad. If the chime feature has already been turned on, another #6 will turn the feature off.

## 25. DOOR STRIKE COMMAND (# 9)

If enabled by your installer a valid user can activate any of the system door strikes through the following command:

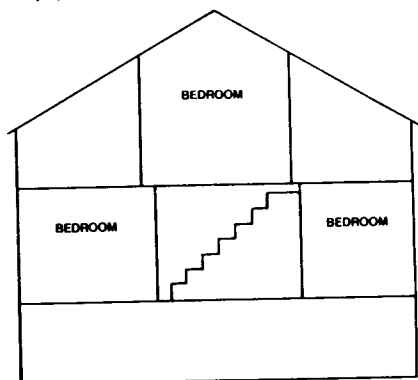
# 9 [USER] [door strike number]

For example to activate door strike 3 (assume a user code of 2468) enter:

# 9 2468 3

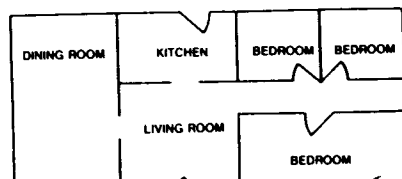
## 26. INSTALLATION LAYOUT

Early warning fire detection is best achieved by the installation of fire detection equipment the location as follows;



In homes with more than one sleeping area a smoke detector should be provided to protect each area.

Typical Smoke Detector Layout  
(Proposed)



Smoke detector shall be located between the sleeping area and the rest of the house.

NOTES:

1. Designates smoke detectors
2. Refer to N.F.P.A. #74 Appendix B-1.1 thru B-10

Preparation of an evacuation plan is of prime importance in fire prevention. Establish a household emergency evacuation plan in the event of fire.

- 1- Evaluate possible escape routes from your home.
- 2- Select 2 escape routes from each room.
- 3- Rooms on the second floor should have a rope ladder. Be sure it will reach the ground.
- 4- Draw a rough sketch of your escape plan so everyone is familiar with it.
- 5- Practice your escape plan to assure that everyone knows what to do.
- 6- Establish a meeting place outside where your family is to report. Once you have evacuated the house do not return to a burning house.
- 7- Advise the local fire authority that you have installed a fire alarm system.
8. When the fire alarm signals, LEAVE IMMEDIATELY. Do not stop for belongings.
9. If a fire occurs, test the door. If hot, use your alternate route. If the door is cool, brace your shoulder against it and open it cautiously. Shut the door to help prevent the fire and smoke from spreading. Crawl through smoke, holding your breath.
10. Contact the Fire Department from a neighbor's telephone.
- 11 Everyone including neighbors should be familiar with the Fire and Burglary signals. In this installation the Fire Alarm signal is \_\_\_\_\_ The Burglary Alarm signal is \_\_\_\_\_

## 27. SYSTEM TESTING

This control unit was manufactured under rigid quality standards. Maintenance is best performed by your installing company with trained service personnel.

Installing Company: \_\_\_\_\_  
Telephone Number: \_\_\_\_\_

It is recommended that you test your system once a week using the following procedure:

Note: If your XL4612 system is monitored by a Central Station then contact them prior to performing this test.

- 1- Arm your security system.
- 2- Activate the system by opening a protected zone (example, window, or door).
- 3- Confirm that the alarm sounding device (bell or siren) activates. If your system is connected to a Central Station then the keypad will emit a ringback sound to confirm that the signal was received.
- 4- Disarm the system to silence the system and return to normal status.

### BATTERY TEST

In order to test the backup battery the following procedure should be performed:

- 1- Remove the AC transformer from the AC outlet by removing the restraining screw which secures the transformer to the wall. (Note: the screw is not present in models sold in Canada).
- 2- Observe that the AC light goes off on the keypad.
- 3- Activate your alarm system using steps 1-4 listed above.
- 4- Replace the AC transformer to the AC outlet and secure using the retaining screw (Note: The retaining screw is not present in models sold in Canada).

The National Fire Protection Association publishes a standard for household fire warning equipment. N.F.P.A. #74. Further information can be obtained by contacting; NFPA Public Affairs Dept., Batterymarch Park, Quincy, MA 02269.

If you have any further questions about the operation of your system, call your installer.

## SUMMARY

### PROCEDURE

### SEQUENCE

ARM SYSTEM	[USER]
STAY	STAY [USER]
INSTANT	INSTANT [USER]
INSTANT-STAY	INSTANT STAY[USER] or STAY INSTANT [USER]
BYPASS	BYPASS [USER] [ZN]
UNBYPASS	BYPASS [ZN] If zone already bypassed
DISARM	[USER]
USER DEFINITION	CODE [USER] [USER NUMBER] [USID]
USER DELETION	CODE [USER] [USER NUMBER]

### KEYPAD EMERGENCY CONDITIONS

Panic	* #
Fire	7 9
Aux.	1 3

### QUICK COMMANDS:

DOOR STRIKE	# 0 [USER] [trigger number]
QUICK ARM	# 1
QUICK FORCED ARM	# 2
TIME SET	# 3 [USER] HH MM
ZONE DIRECTORY	# 4
SET AUTO-ARMING TIME	# 5 [USER] HH MM
CHIME MODE	# 6

## OWNERS INFORMATION

NAME: \_\_\_\_\_

ADDRESS: \_\_\_\_\_

CITY, STATE, ZIP: \_\_\_\_\_

TELEPHONE NUMBER: \_\_\_\_\_

Date of Installation: \_\_\_\_\_

EMERGENCY NUMBERS:

CENTRAL STATION: \_\_\_\_\_

FIRE DEPARTMENT: \_\_\_\_\_

POLICE DEPARTMENT: \_\_\_\_\_

NEIGHBOR: \_\_\_\_\_

GAS/ELECTRIC DEPT: \_\_\_\_\_

DOCTOR: \_\_\_\_\_

HOSPITAL: \_\_\_\_\_

EMERGENCY \_\_\_\_\_

SERVICE INFORMATION:

ALARM INSTALLING COMPANY: \_\_\_\_\_